

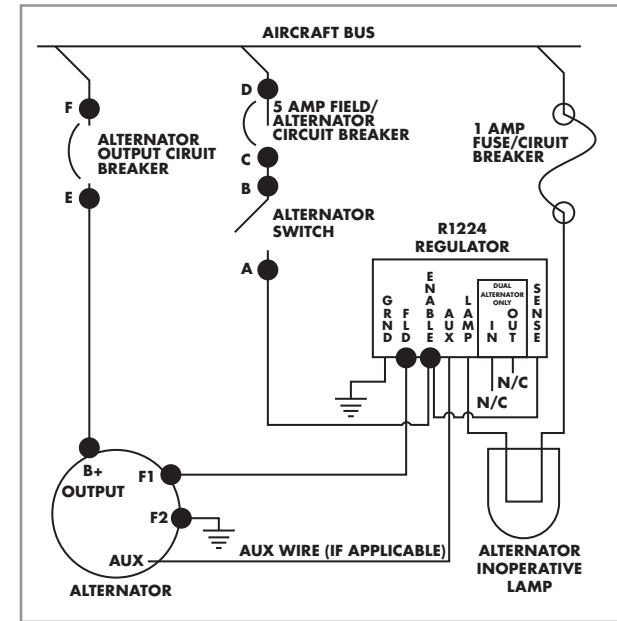
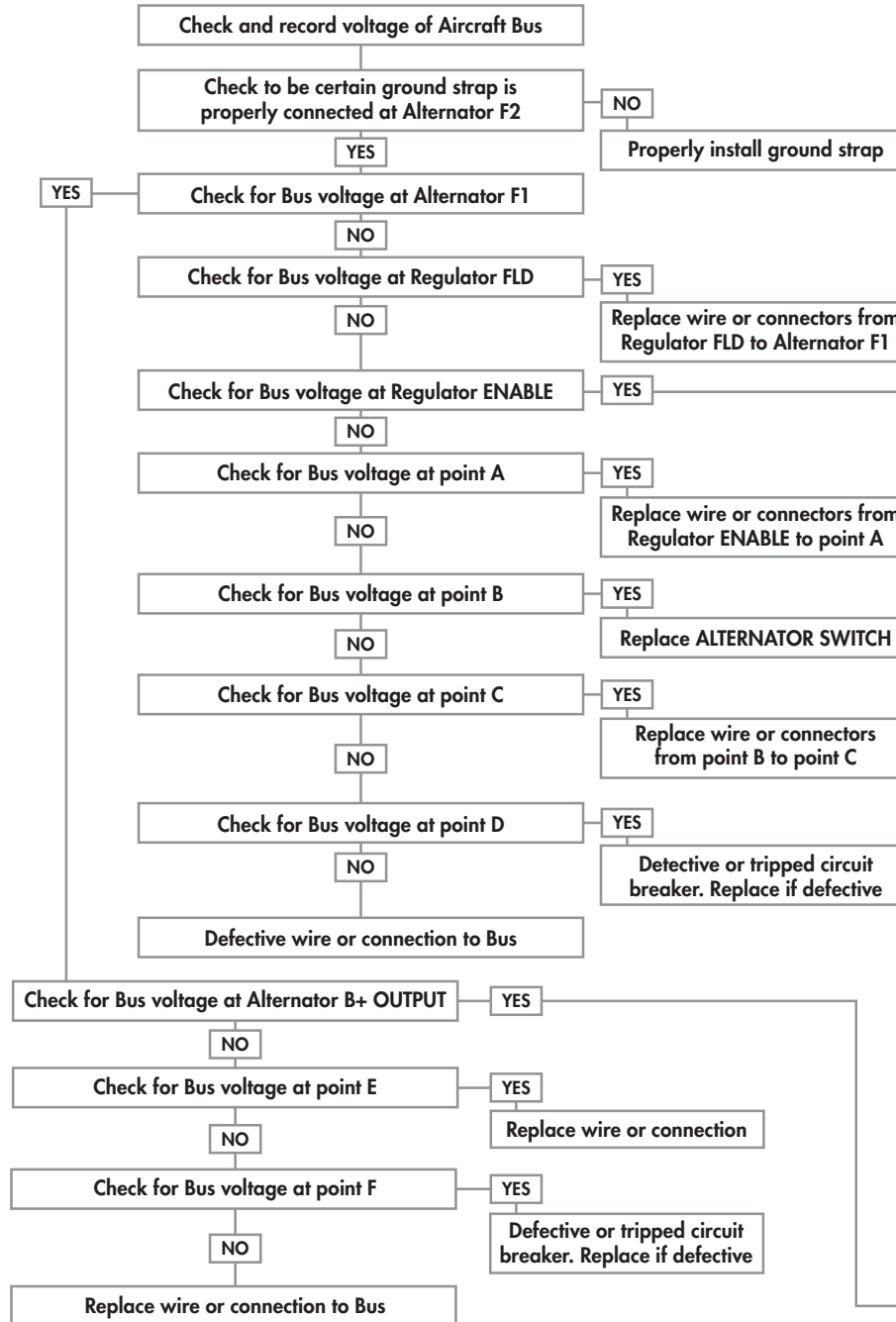
Record Aircraft Bus Voltage: \_\_\_\_\_

**NOTE Perform all tests with:**

1. ALTERNATOR SWITCH on
2. Master Switch on
3. Engine off
4. Magnetos turned off or grounded

**Additional Considerations:**

1. Voltage drop of .5 volts MAX at all points except across the VR.
2. Voltage drop of 1 to 1.5 volts across the actual regulator acceptable.
3. MAX resistance of .2 ohms at ground points, across switches and conductors.
4. MAX of 1 volt AC at ALT B+ Terminal.
5. Engine operating speeds and load requested affect output.



Note: The following applies to Plane-Power R1224 Voltage Regulators. If another manufacturer's voltage regulator is installed, refer to their maintenance manual.

