



2900 Selma Highway  
Montgomery, AL 36108 USA  
Tel: 334-386-5400 Fax: 334-386-5450

# SERVICE BULLETIN

## Service Bulletin No. 075

### Alternator Drive Coupling Inspection

#### 1. Planning Information

##### A. Effectivity

- (1) Plane-Power Jasco series alternators manufactured by Hartzell Engine Technologies (HET) and Skytronics Inc. PNs 6555(T, C), 6565(T, C), 7555(T, C), 7565(T, C), and 7655(T, C) are affected by this Service Bulletin (SB).
  - (a) 6555(T, C) serial numbers H-S060104 and prior are affected by this SB.
  - (b) 6565(T, C) serial numbers H-S060108 and prior are affected by this SB.
  - (c) 7555(T, C) serial numbers H-S060118 and prior are affected by this SB.
  - (d) 7565(T, C) serial numbers H-S051413 and prior are affected by this SB.
  - (e) 7655(T, C) serial numbers H-S050284 and prior are affected by this SB.
- (2) Aircraft Type/Model and alternator part numbers affected by this SB are shown in Table 1 – Alternator/Aircraft Effectivity.

**NOTE:** Table 1 is for reference only and is not an all-inclusive list of aircraft affected by this SB. It is the responsibility of the owner/operator to verify whether an affected alternator may be installed.

**WARNING:** DO NOT USE OBSOLETE OR OUTDATED INFORMATION. PERFORM ALL INSPECTIONS OR WORK IN ACCORDANCE WITH THE MOST RECENT REVISION OF THIS SERVICE BULLETIN. INFORMATION CONTAINED HEREIN MAY BE SIGNIFICANTLY CHANGED FROM EARLIER REVISIONS. FAILURE TO COMPLY WITH THIS SERVICE BULLETIN OR THE USE OF OBSOLETE INFORMATION MAY CREATE AN UNSAFE CONDITION THAT MAY RESULT IN DEATH, SERIOUS BODILY INJURY, AND/OR SUBSTANTIAL PROPERTY DAMAGE. REFER TO THE PLANE-POWER WEBSITE, [WWW.PLANEPOWER.AERO](http://WWW.PLANEPOWER.AERO), FOR THE MOST RECENT REVISION LEVEL OF THIS SERVICE BULLETIN.

##### B. Concurrent Requirements

- (1) None

##### C. Reason

- (1) HET has discovered alternators containing part numbers listed in section 1.A. of this SB contain a condition that has potential, if not corrected, to introduce foreign object debris (FOD) into the engine cavity.

# **SERVICE BULLETIN**

## **Service Bulletin No. 075**

### **Alternator Drive Coupling Inspection**

#### D. Description

- (1) This Service Bulletin provides Instructions for Continued Airworthiness (ICA).
- (2) This Service Bulletin provides instructions for inspection and replacement of affected alternator drive coupling components.

#### E. Compliance

- (1) Compliance with section 3.A of this SB is required within twenty-five (25) hours time-in-service from the release date of this SB or at the next regularly scheduled inspection, whichever occurs first.
- (2) Compliance with section 3.B of this SB is required no later than two hundred and fifty (250) hours time-in-service from the release date of this SB.
- (3) Compliance with the Accomplishment Instructions is the terminating action for this Service Bulletin.

#### F. Approval

- (1) FAA acceptance has been obtained on the technical data in this publication that affects type design.

#### G. Manpower

- (1) Two (2.0) man hours of labor are needed for removal, inspection, and installation of the alternator.
- (2) One (1.0) man hour of labor is needed for removal, inspection, and replacement of affected alternator drive coupling components.

#### H. References

- (1) Applicable aircraft POH or AFM
- (2) Aircraft maintenance manual (as applicable).

#### I. Weight and Balance

- (1) No Change

## **2. Material Required**

- A. New or overhauled Jasco alternator not affected by this SB.
- B. See Table 2 for field-replacement components.

# SERVICE BULLETIN

## Service Bulletin No. 075

### Alternator Drive Coupling Inspection

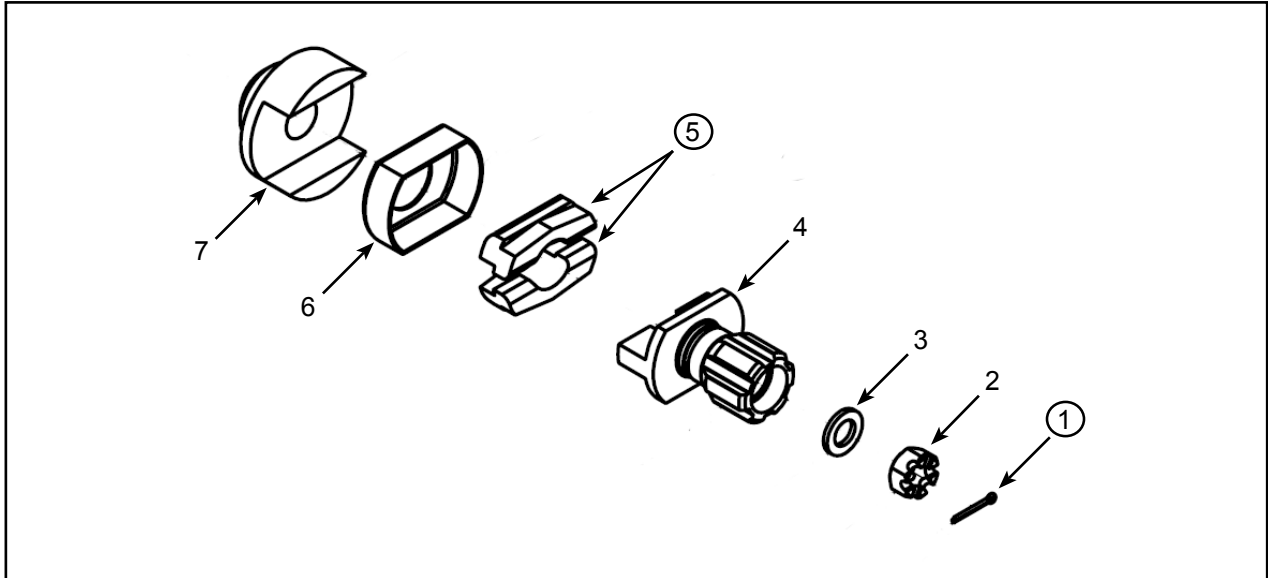
Alternator PN	Aircraft Make	Aircraft Model/Series	
6555(T, C)	Cessna	150, 170, 172, 175 IAW STC SA971WE	
	Cessna	A188, A, B modified IAW Air Repair, Inc. STC SA2279SW	
	Cessna	190, 195, A, B modified IAW Air Repair, Inc. STC SA1809SW	
6565(T, C)	Cessna	H-295 (USAF U-10D), HT-295, H391 (USAF L-28A or U-10B) modified IAW JAARS STC SA987SO	
7555(T, C)	Texas Helicopter Company, Inc.	US Army OH-13H, Tomcat Mark 5A, Mark 6B modified IW Texas Helicopter Comin Inc. IAW STC SH2303SW	
	Thrush Aircraft	S-2R, S2R-R1340	
	Cessna	A188, A, B modified IAW Air Repair, Inc. IAW STC SA2279SW	
7565(T, C)	Emair	MA-1B	
7655(T, C)	Weatherly Aviation Company, Inc	620A, 620B	
	Air Tractor Inc.	AT-300, AT-301, AT-401, AT-401B, AT-501	
<b>Alternators Purchased as Part of a Kit - Kits include alternator 6555(T, C) or 7555(T, C)</b>			
Kit PN	Alterntor PN	Aircraft Make	Aircraft Model Series
6555-1	6555(T, C)	Grumman	G164A - with STC SA2015WE installed
		Beech	35, A35, B35, C35, D35, E35, F35, 35R IAW STC SA999WE
7555-1	7555(T, C)	Bell	47G, 47G2 - with STC SH191WE installed
		Bell	47G-2A, 47G-2A-1, 47G-3, 47G-3B, 47G-3B-1, 47G-3B-2, 47G03B-2A, 47G-4, 47G-4A, 47G-5, 47G-5A - with STC SH193WE installed
		Bell	47J, 47J2, 47J2A, 47K - with STC SH194WE installed
		Grumman	G164A - with STC SA2015WE installed

Table 1 - Alternator/Aircraft Effectivity

# SERVICE BULLETIN

## Service Bulletin No. 075

### Alternator Drive Coupling Inspection



Item No.	Part Number	Description	Alternator / Quantity				
			6555(T, C)	6565(T, C)	7555(T, C)	7565(T, C)	7655(T, C)
①	MS24665-132	Cotter Pin	1		1		1
2	AN320-5	Nut, (Castle)▲	1		1		1
②	NAS1291C5M	Nut, Self Locking		1		1	
3	NAS1149F0563P	Washer, Flat ▲	1	1	1	1	1
4	669	Gear, Drive ▲	1		1		1
4	689	Gear, Drive ▲		1		1	
⑤	626543SKY	Bushing	2	2	2	2	2
6	668-2	Retainer ▲	1	1	1	1	1
7	671	Hub ▲	1	1	1	1	1

**NOTE 1:** Circled Item Numbers are required replacement parts per affected alternator.

**NOTE 2:** ▲ On-condition items. Replace if worn or damaged.

**Table 2 - Materials Required**

# SERVICE BULLETIN

## Service Bulletin No. 075

### Alternator Drive Coupling Inspection

#### 3. Accomplishment Instructions

**WARNING 1:** THIS PROCEDURE MUST BE PERFORMED BY COMPETENT AND QUALIFIED PERSONNEL WHO ARE FAMILIAR WITH THE AIRFRAME AND ENGINE SYSTEM MAINTENANCE. FAILURE TO DO SO MAY RESULT IN PHYSICAL INJURY, EQUIPMENT DAMAGE AND/OR ECONOMIC LOSS.

**WARNING 2:** DO NOT USE OBSOLETE OR OUTDATED INFORMATION. PERFORM ALL INSPECTIONS OR WORK IN ACCORDANCE WITH THE MOST RECENT REVISION OF THIS SERVICE BULLETIN. INFORMATION CONTAINED HEREIN MAY BE SIGNIFICANTLY CHANGED FROM EARLIER REVISIONS. FAILURE TO COMPLY WITH THIS SERVICE BULLETIN OR THE USE OF OBSOLETE INFORMATION MAY CREATE AN UNSAFE CONDITION THAT MAY RESULT IN DEATH, SERIOUS BODILY INJURY, AND/OR SUBSTANTIAL PROPERTY DAMAGE. REFER TO THE PLANE-POWER WEBSITE FOR THE MOST RECENT REVISION LEVEL OF THIS SERVICE BULLETIN, WWW.PLANEPOWER.AERO.

**CAUTION:** REFER TO THE APPLICABLE MANUFACTURER'S MAINTENANCE MANUALS OR SERVICE INSTRUCTIONS TO GAIN ACCESS TO THE AIRFRAME OR ALTERNATOR. IN ADDITION, ANY PREFLIGHT OR IN-FLIGHT OPERATIONAL CHECKS REQUIRE USE OF THE APPROPRIATE AFM OR POH.

#### A. Inspection

- (1) If previous compliance cannot be verified through aircraft or engine maintenance records, use the same references to determine if an affected alternator has been installed. Refer to section 1.A, Effectivity.
- (2) If effectivity of the alternator cannot be established using aircraft or engine maintenance records, utilize the applicable aircraft maintenance manual to gain access to the alternator and inspect the alternator serial number against affected serial numbers found in section 1.A of this SB.
- (3) If the alternator serial number is affected per section 1.A:
  - (a) Utilize applicable aircraft maintenance manual to remove the alternator and inspect the alternator gear drive (Item Number 4, Table 2 – Materials Required) for correct alignment. Refer to Figures 1 & 2 - Alignment Inspection.
    - 1) If **INCORRECT** alternator gear drive alignment is observed, continue to Corrective Action section 3.B.(1).
    - 2) If **CORRECT** alignment is observed, the affected alternator may be re-installed on aircraft and re-inspected in accordance with section 3.A.(3) every fifty (50) hours time-in-service until a total of two hundred and fifty (250) hours time-in-service is reached from release date of this SB.

# SERVICE BULLETIN

## Service Bulletin No. 075

### Alternator Drive Coupling Inspection

- a) When a total of 250 hours time-in-service is reached from the release date of this SB, continue to Corrective Action section 3.B.(1) of this SB regardless of inspection findings.



Figure 1 - **CORRECT** Alignment

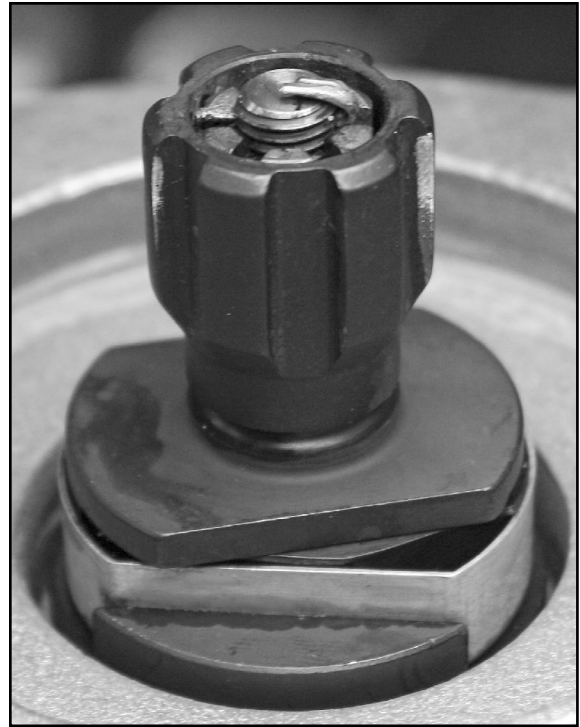


Figure 2 - **INCORRECT** Alignment

Figures 1 & 2 - Alignment Inspection

#### B. Corrective Action

*Refer to Item Numbers in Table 2 – Materials Required.*

(1) Disassembly

(a) Disassembly of alternator PNs 6555(T, C), 7555(T, C), and 7655(T, C).

1) Remove Cotter Pin (1) from Gear Drive Nut (2) and discard.

2) Reference Figure 3 to fabricate a tool that will interface with nut castellations and remove Nut (2) from the gear shaft. Retain nut (2) and washer (3) for assembly.

# SERVICE BULLETIN

## Service Bulletin No. 075

### Alternator Drive Coupling Inspection

- a) Hold base of Drive Gear (4) with a one inch crowfoot wrench or small strap wrench while removing Nut (2).
- 3) Remove Drive Gear (4) from gear shaft and retain for assembly.
- 4) Remove Bushings (5) from Retainer (6) and discard.
- 5) Inspect On-condition (▲) parts for damage. Replace if worn or damaged. *Refer to Item Numbers in Table 2 – Materials Required.*

- (b) Disassembly of alternator PNs 6565(T, C), and 7565(T, C).

**NOTE:** PNs 6565 and 7565 do not contain flats for a crowfoot wrench at the base of the drive gear.

- 1) Hold base of Drive Gear (4) with a strap wrench and remove nut (2) from gear shaft and discard.
- 2) Remove washer (3) and retain for assembly.
- 3) Remove Drive Gear (4) from gear shaft and retain for Assembly.
- 4) Remove Bushings (5) from Retainer (6) and discard.
- 5) Inspect On-condition (▲) parts for damage. Replace if worn or damaged. Refer to Table 2 indexed parts.

#### (2) Assembly

- (a) Assembly of alternator PNs 6555(T, C), 7555(T, C), and 7655(T, C).

- 1) Install new Bushings (5) into Retainer (6).
- 2) Install Drive Gear (4).
- 3) Install Washer (3).
- 4) Install Nut (2) and torque 10-14 ft. lbs.
  - a) Hold base of Drive Gear (4) with a one inch crowfoot wrench or small strap wrench while torquing Nut (2).
- 5) Install Cotter Key (1).

- (b) Assembly of alternator PNs 6565 (T, C) and 7565 (T, C).

- 1) Install new Bushings (5) into Retainer (6).
- 2) Install Drive Gear (4).
- 3) Install Washer (3).
- 4) Install Self Locking Nut (2) and torque 25-30 ft. lbs. using a standard socket.
  - a) Hold base of Drive Gear (4) with a small strap wrench while torquing Nut (2).

# SERVICE BULLETIN

## Service Bulletin No. 075

### Alternator Drive Coupling Inspection

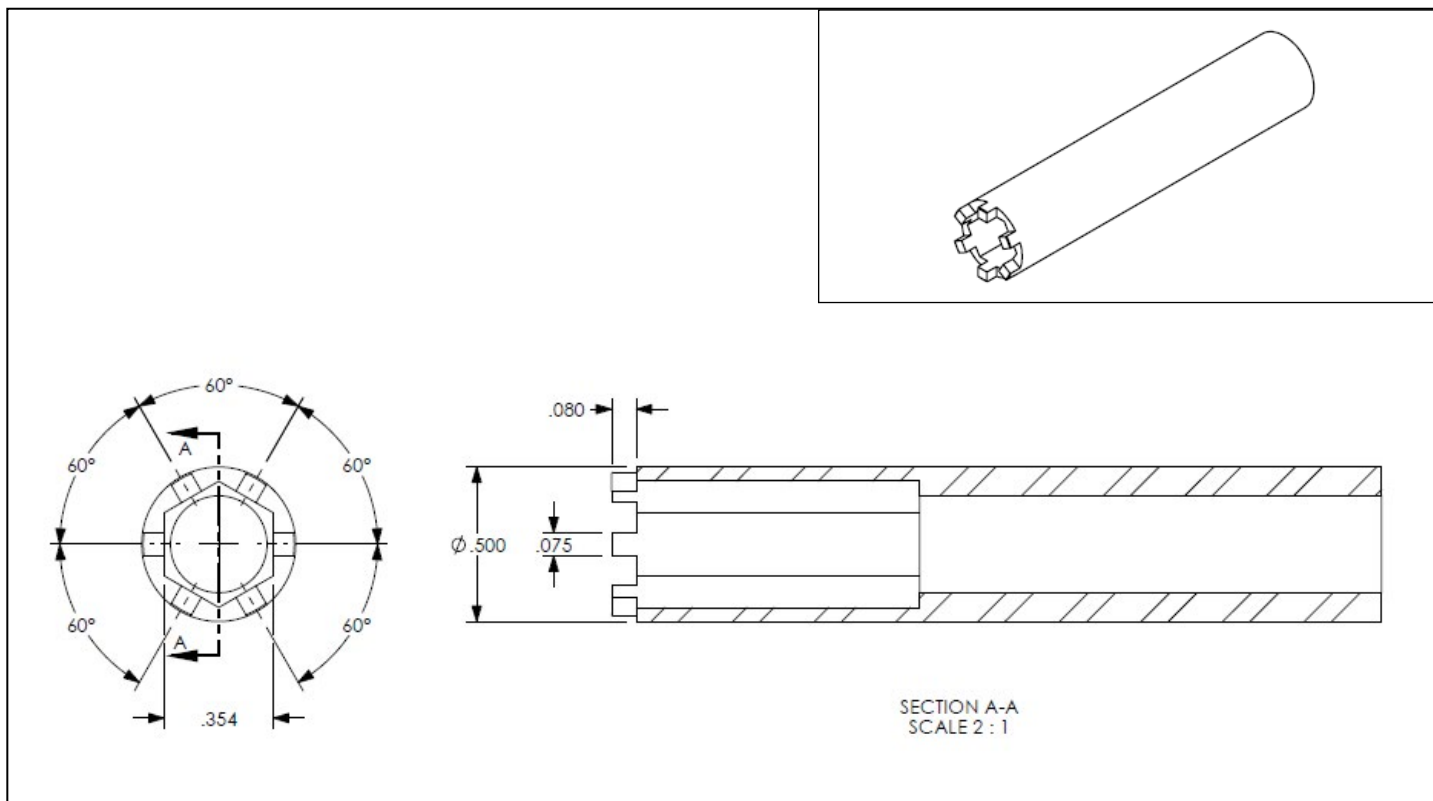


Figure 3 - Tool Fabrication Design

#### C. Return to Service

- (1) Reinstall alternator in accordance with the applicable airframe and/or engine maintenance manual.
- (2) Perform the recommended alternator operational tests in accordance with the aircraft AFM or POH.

#### D. Maintenance Record

- (1) For terminating action, make an aircraft logbook entry to indicate compliance with this Service Bulletin.



# **SERVICE BULLETIN**

## **Service Bulletin No. 075**

### **Alternator Drive Coupling Inspection**

#### **4. Contact Information**

A. Contact HET Product Support for all communications regarding the technical content of this Service Bulletin.

(1) Phone +1.334.386.5400 (Option 2)

(2) Fax +1.334.386.5450

(3) E-mail at [techsupport@HartzellEngineTech.com](mailto:techsupport@HartzellEngineTech.com)

(4) Address

Hartzell Engine Technologies LLC - ATTN: Product Support  
2900 Selma Highway  
Montgomery, AL 36108  
USA

# Service Bulletin Appendix

## Service Bulletin No. 075

### Alternator Drive Coupling Inspection

#### 1. Eligibility:

- A. Plane-Power Jasco series alternators affected by section 1.A of Service Bulletin 075 (SB).

#### 2. Commercial Assistance Program:

The following will be provided with the submission of a completed SB 075 Claim Form, copies of invoices showing breakdown of material and labor charges, and log book entries. **Any commercial assistance or other consideration shall expire twelve (12) calendar months from the original published date of Service Bulletin No. 075.**

- A. Replacement components listed in Table 2 of SB 075.
- B. Labor for Inspection to determine if an alternator is affected is negligible when performed during a regularly scheduled Inspection or event, and is within compliance time of SB 075.
- C. Labor for removal & installation for affected alternators will be paid at a shop rate of \$75 an hour up to the amount specified below:
  - (1) Up to two (2) hours of labor for removal and installation of an affected alternator.
  - (2) Up to one (1) man hour of labor for replacement of affected alternator drive coupling components.

#### 3. Commercial Assistance ADMINISTRATION:

- A. Complete the Service Bulletin SB 075 Claim Form attached to this appendix.
  - (1) Mail, e-mail, or fax the SB 075 Claim Form to the attention of Product Support as indicated on the Service Bulletin Claim Form.
- B. Upon receipt of the Service Bulletin Claim Form, Hartzell Engine Technologies LLC HET will:
  - (1) Ship the material required by section 2.A to the service provider indicated.
  - (2) The service provider must return proof of service within thirty (30) days or the service provider shall be invoiced for the HET supplied materials.
- C. For labor charges:
  - (1) Aircraft/engine service facility or owner must submit an invoice up to the amount specified in section 2, copies of logbook entries, and a completed SB 075 Claim Form for reimbursement (*May be a copy of the original form provided*).

#### 4. WARRANTY STATEMENT:

- A. The sole warranty for the actions of SB 075 are contained in the HET Limited Warranty Policy issued with the purchase of each new/overhauled alternators (see terms and conditions therein).
- B. Commercial assistance may apply as stated in this Appendix.

# Service Bulletin Appendix

## Service Bulletin No. 075

### Alternator Drive Coupling Inspection

- C. Issuance of SB 075 in no way constitutes an implied or expressed warranty of any kind.
- D. This publication does not imply or state any responsibility for the workmanship of any person or entity performing work or maintenance on the engine or aircraft electrical system.

#### 5. CONTACT INFORMATION:

- A. Contact HET Product Support for all communications regarding the technical content of this Service Bulletin.

- (1) Phone +1.334.386.5400 (Option 2)
- (2) Fax +1.334.386.5410.
- (3) E-mail at [techsupport@HartzellEngineTech.com](mailto:techsupport@HartzellEngineTech.com).
- (4) Address

Hartzell Engine Technologies LLC  
2900 Selma Highway,  
Montgomery, AL 36108  
USA

# Service Bulletin Appendix

## Service Bulletin No. 075

### Alternator Drive Coupling Inspection

#### SB 075 CLAIM FORM

#### Owner information

Name: \_\_\_\_\_ Date: \_\_\_\_\_ Tel: \_\_\_\_\_ Fax: \_\_\_\_\_

Company Name: \_\_\_\_\_ E-mail: \_\_\_\_\_

Address: \_\_\_\_\_

City: \_\_\_\_\_ State: \_\_\_\_\_ Postal Code: \_\_\_\_\_

Country: \_\_\_\_\_

#### Aircraft/Engine Service Facility information

Name: \_\_\_\_\_ Date: \_\_\_\_\_ Tel: \_\_\_\_\_ Fax: \_\_\_\_\_

Company Name: \_\_\_\_\_ E-mail: \_\_\_\_\_

Address: \_\_\_\_\_

City: \_\_\_\_\_ State: \_\_\_\_\_ Postal Code: \_\_\_\_\_

Country: \_\_\_\_\_

Aircraft Mfg: \_\_\_\_\_ Model: \_\_\_\_\_ Time in Service: \_\_\_\_\_ S/N: \_\_\_\_\_

Engine: \_\_\_\_\_ Model: \_\_\_\_\_ Time in Service: \_\_\_\_\_ S/N: \_\_\_\_\_

#### Component Information

Nomenclature: Alternator \_\_\_\_\_ Part Number: \_\_\_\_\_

Serial Number: \_\_\_\_\_ (Alternator) Date Removed: \_\_\_\_\_

Part Time in Service: \_\_\_\_\_ (Alternator) Original Date Installed: \_\_\_\_\_

For RMA Number

Send this SB 075 Claim Form to:

Hartzell Engine Technologies Product Support

Fax: +1.334.386.5410

E-mail: techsupport@hartzellenginetech.com

#### RMA Number:

(write in HET assigned RMA number)

**Hartzell Use Only - do not write below this line.**

Warranty No: \_\_\_\_\_ Authorized by: \_\_\_\_\_