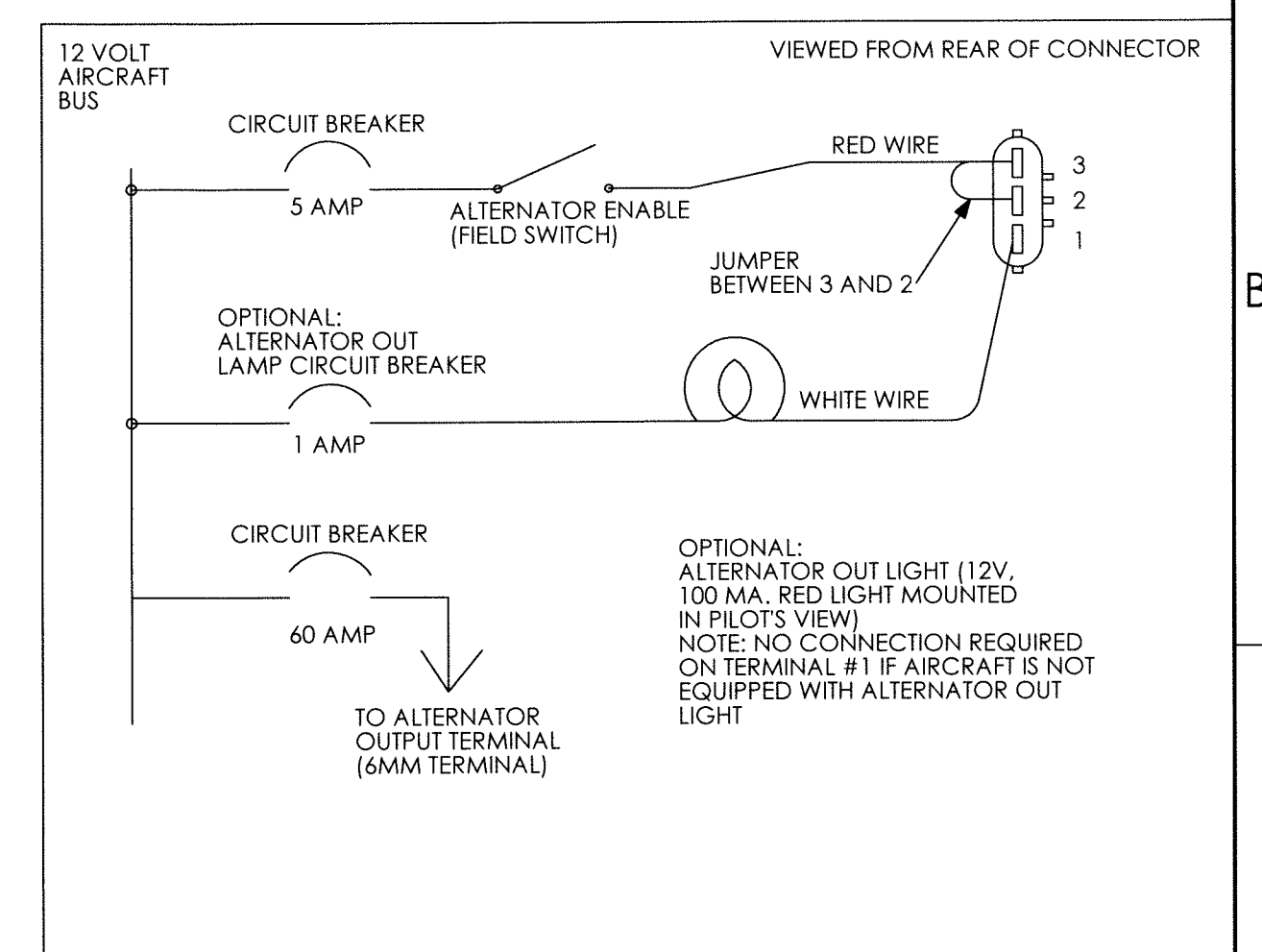
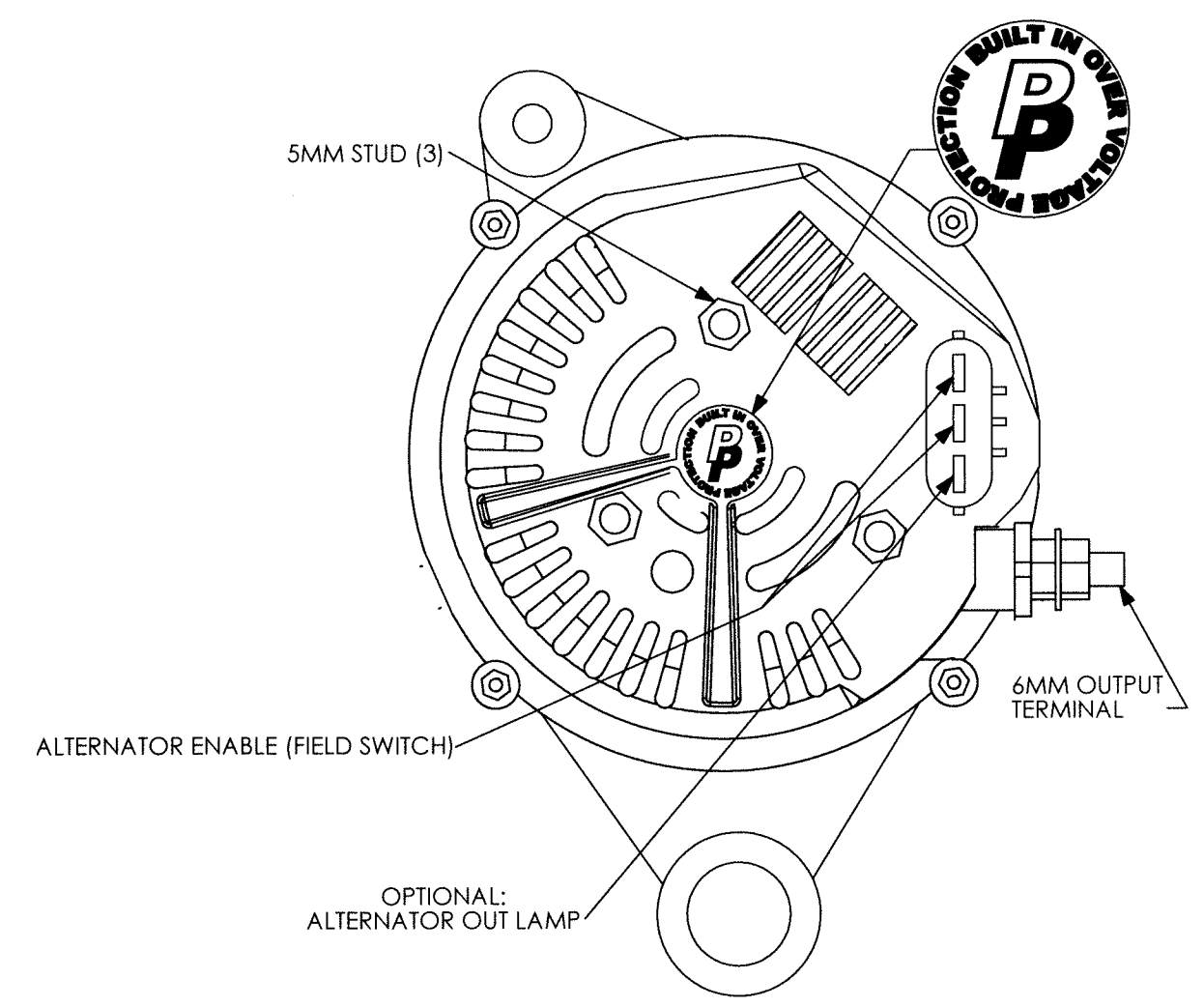
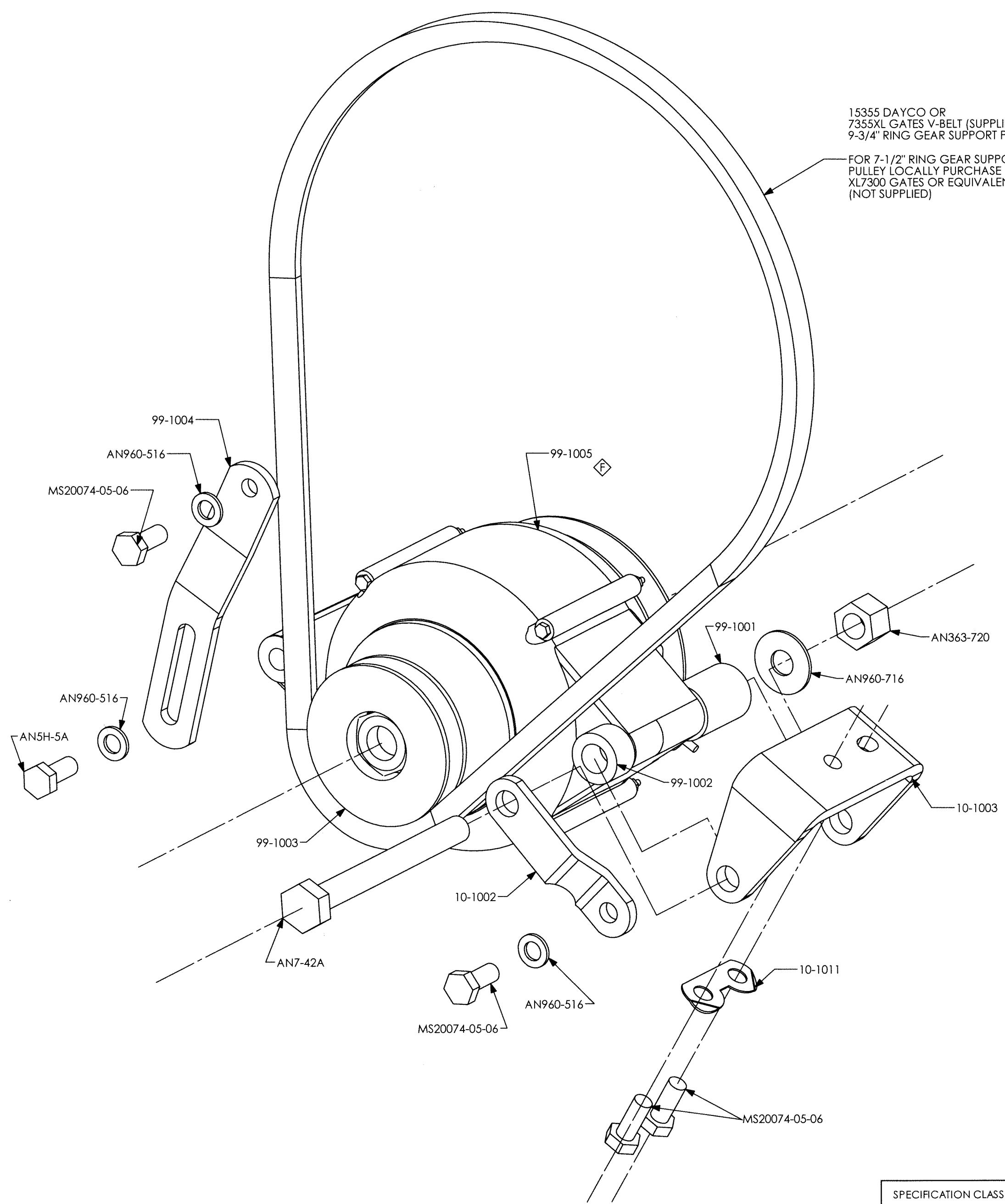


12 VOLT 60 AMP EXPERIMENTAL ALTERNATOR, W/INTERNAL VOLTAGE REGULATOR AND OVERVOLTAGE PROTECTION

NOTES:
 1. SAFETY WIRE (2) TENSION ARM BOLTS (MS20074-05-06 & AN5H-5A) WITH .032" SAFETY WIRE.

EN		REV.	DESCRIPTION	BY	DATE
1412014	F		1) FIRST RELEASE INTO HET DESIGN DATA; 2) HET TITLEBLOCK WAS PLANE POWER LTD.; 3) ON SHEET 2, "MAINTENANCE INSTRUCTIONS" WAS "INSTRUCTIONS FOR CONTINUED AIRWORTHINESS"; 4) ON SHEET 1, REMOVED "INSTALLATION AND..." ANNOTATION; 5) REVISED P/N TO 99-1005	OKQ	12/18/14



UNLESS OTHERWISE SPECIFIED DIMENSIONS ARE IN INCHES AND APPLY AFTER HEAT TREAT AND PLATING .X = ±.015 .XX = ±.010 .XXX = ±.005 ANGLES ±1° BREAK ALL EDGES AND MACHINE ALL INSIDE CORNER FILLETS .015 MAX. SURFACE FINISH			GEOMETRIC SYMBOLS PER ANSI Y14.5 FLATNESS STRAIGHTNESS ROUNDNESS CYLINDRICITY PROFILE PERPENDICULARITY POSITION CONCENTRICITY SYMMETRY ANGULARITY PARALLELISM CIRCULAR RUNOUT TOTAL RUNOUT		DRAWN BJ 07/11/05 CHECKED EAB 12/18/14 ENG. CMB 12/18/14 FINISH N/A WEIGHT N/A MATERIAL SEE INDIVIDUAL COMPONENTS SIZE C SH 1 OF 2 CODE ID 65PY1	HARTZELL ENGINE TECHNOLOGIES 2900 Selma Highway Montgomery, AL 36108 AL 12-E160/B INSTALLATION INSTRUCTIONS DRAWING NO. 99-9900B REV. F															
SPECIFICATION CLASSIFICATION <table border="1"> <thead> <tr> <th>CLASSIFICATION</th> <th>DIMENSION CONVENTION</th> <th>NOTE NO. CONVENTION</th> </tr> </thead> <tbody> <tr> <td>CRITICAL</td> <td><XX.XX></td> <td>#</td> </tr> <tr> <td>MAJOR</td> <td>[XX.XX]</td> <td>#</td> </tr> <tr> <td>MINOR</td> <td>XX.XX</td> <td>#</td> </tr> <tr> <td>REFERENCE</td> <td>(XX.XX)</td> <td>(#)</td> </tr> </tbody> </table>			CLASSIFICATION	DIMENSION CONVENTION	NOTE NO. CONVENTION	CRITICAL	<XX.XX>	#	MAJOR	[XX.XX]	#	MINOR	XX.XX	#	REFERENCE	(XX.XX)	(#)	THIS DRAWING CONTAINS INFORMATION THAT IS CONFIDENTIAL AND PROPRIETARY TO HARTZELL ENGINE TECHNOLOGIES. THIS DRAWING IS FURNISHED ON THE UNDERSTANDING THAT THE DRAWING AND THE INFORMATION IT CONTAINS WILL NOT BE COPIED OR DISCLOSED TO OTHERS EXCEPT WITH THE WRITTEN CONSENT OF HARTZELL ENGINE TECHNOLOGIES. WILL NOT BE USED TO THE DETRIMENT OF HARTZELL ENGINE TECHNOLOGIES, AND WILL BE RETURNED UPON REQUEST BY HARTZELL ENGINE TECHNOLOGIES.			
CLASSIFICATION	DIMENSION CONVENTION	NOTE NO. CONVENTION																			
CRITICAL	<XX.XX>	#																			
MAJOR	[XX.XX]	#																			
MINOR	XX.XX	#																			
REFERENCE	(XX.XX)	(#)																			

Part No. 99-9900

Installation Instructions

1. Disconnect aircraft battery.
2. Install alternator per included drawing. Supply outside ram air to rear of alternator By the use of 1" scat tube or other suitable ducting.
3. Refer to appropriate engine service manual for belt tension and bolt torques.
4. Install battery wire with MS25171-2S terminal nipple on 6mm output terminal and torque to 50 in. lb.
5. Install connector in rear of alternator and wire in accordance with diagram on front of drawing
6. Reconnect aircraft battery.
7. Start engine, enable alternator and check for proper buss voltage.

Troubleshooting Instructions

Alternator is equipped with an internal crowbar over-voltage protection circuit which will disable alternator if an over-voltage condition is sensed.

If 5-amp enable circuit breaker trips from an over-voltage condition in the alternator:

1. Reset 5-amp enable circuit breaker and continue operation.
2. If 5-amp enable circuit breaker trips again, land as soon as possible and investigate cause.

Maintenance Instructions

Annual Inspection:

1. Remove drive belt and turn alternator rotor to check condition of bearings for abnormal noise or roughness.

5 year or 1000 hour intervals:

1. Repeat: Annual Inspection.
2. Remove field brush assembly and inspect brushes for excess wear. Replace brush assembly if brushes extend less than .250" from edge of brush holder case.